



 [www.tangadeveloper.com](http://www.tangadeveloper.com)

 +91 95021 79931



# COME HOME.

Home is your inner circle.

Home is where you're surrounded by warmth and love. Home is where you feel one amongst family, one amongst friends, neighbours and community. One part of a tightly woven tapestry. Beautiful on its own but stronger together.

Home is Sukhii Ubuntu.

A thoughtfully designed, well-connected, modern-day haven that celebrates life.



LIVE  
TOGETHER.  
THRIVE  
TOGETHER.

With its roots in African philosophy, Ubuntu means to bring you the oneness of humanity. You are stronger, more resilient and more complete when you're part of a community that shapes you, just as you shape it. Ubuntu gives you that community, with thoughts, ideas and inspirations passing back and forth like strong electrical impulses.

Ubuntu is the home that you've been seeking all your life.



UMUNTU

NGUMUNTU

NGABANTU

Huma nit y

Towards

Others

CELEBRATING  
LIFE TOGETHER





# UBUNTU IN YOUR EVERYDAY

Ubuntu lives by these principles, built into its very foundation. They will impact the lives of every inhabitant, in ways big and small.



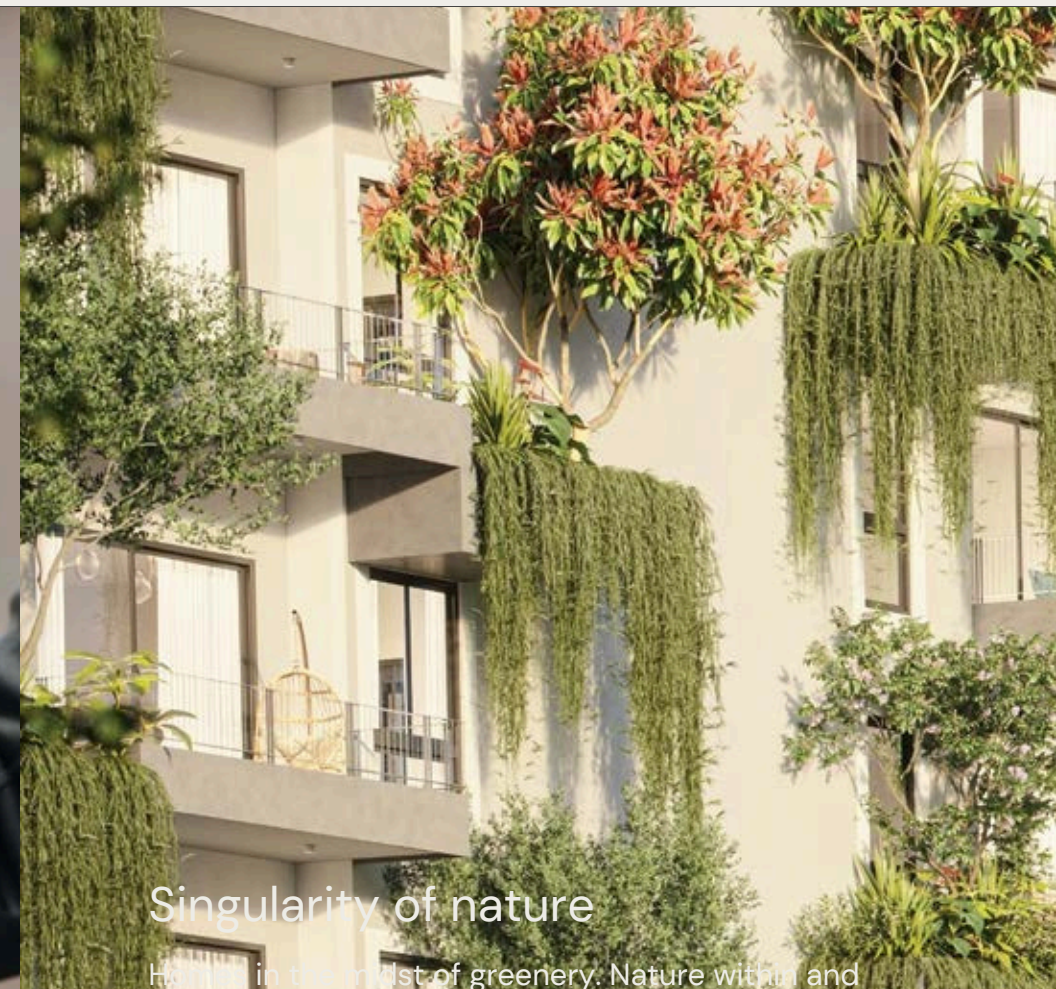
## Convergence of space

The inside merges with the out. Ground, earth and sky intertwine. Sunlight and shadow create magic. Every inch of space here is used, enjoyed, and reveled in.



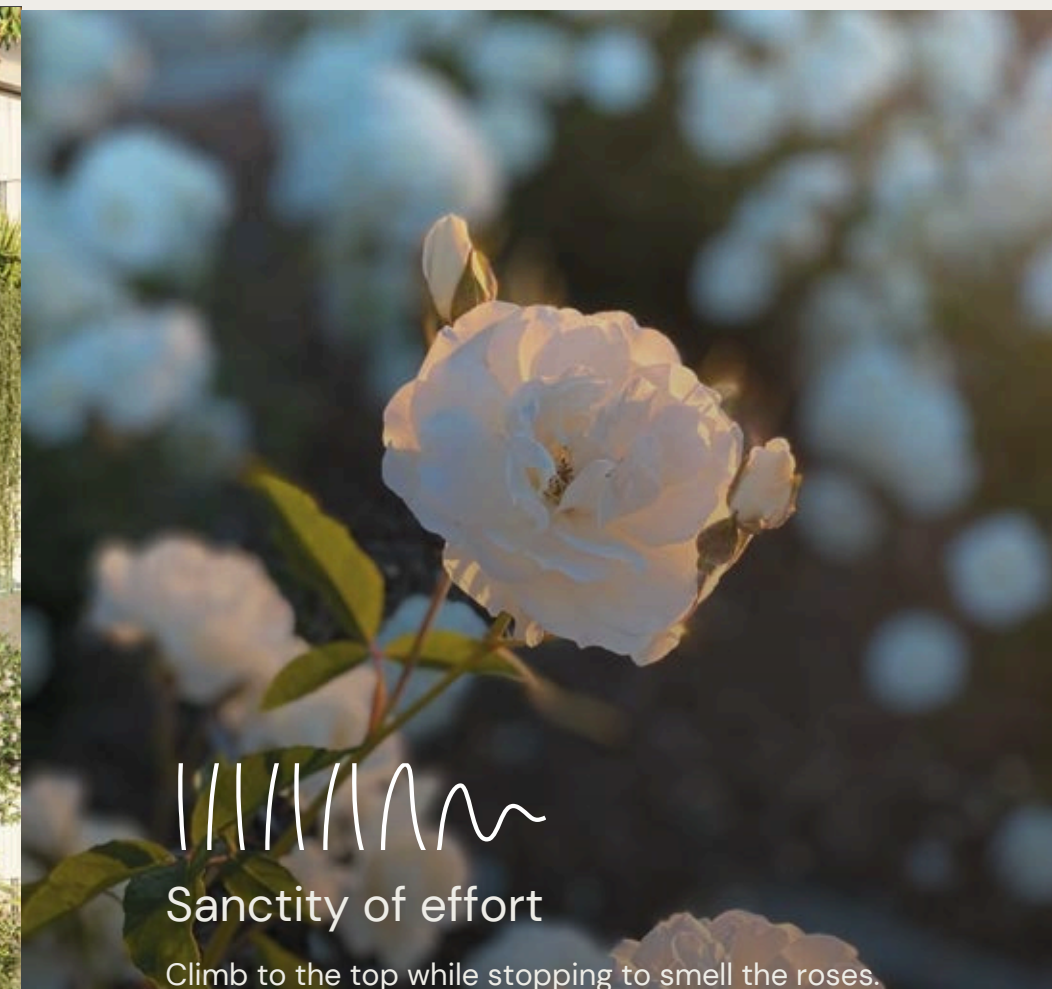
## Unity in vision

Walk with your tribe towards common goals, aspirations, and a vision for the future you want to build. Together.



## Singularity of nature

Harmonize in the midst of greenery. Nature within and without. A master blend of design, architecture, community and greenery that nurtures you, that gives you life and thrives alongside you.



## Sanctity of effort

Climb to the top while stopping to smell the roses. Work coexists with play, activity with leisure, solitude with the social. You CAN have it all.



## Balance in distance

You are as alone or connected as you want to be. Choose to be an island, or emerge into a vibrant culture of connectedness that Ubuntu embodies.





855

# AN ELEVATED LIFE

Apartments

3

Towers

2,3,4

BHK configurations

1,00,000+

Total sq. footage of amenities

36

Storeys

80%

Open space

3.3

Meters floor to floor height

In the heart of Puppalaguda, we've built you a home that gives you all of this. A place where you belong, that immediately feels like home inside and out.



# WHERE UBUNTU DWELLS

Ubuntu dwells towards the west of  
Hyderabad in Puppalaguda, where  
the sun shines bright.  
This is where your community lies.  
This is where you'll find your new  
home, your new way of life.

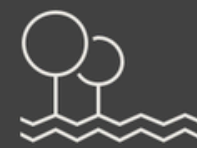


\*map not to scale





Divyasree SEZ



Open gardens for  
kids and families



Airport 30 min away



Numerous malls  
nearby



Close to  
International schools



15 minutes from  
Hi-Tech City



400+ acres of  
Khajaguda hills



0.5 km from lanco  
hills junction



2 minutes from  
Nanakramguda  
Junction



0.5 km from outer  
Ring Road





YOUR UBUNTU  
JOURNEY  
BEGINS HERE



5.25  
ACRES OF  
SERENITY

Feel the force of the community that you are about to have  
alongside you, that you will soon be part of.  
Now take a deep breath, and let's walk into the 5.25-  
acre wide haven that will soon be yours.



# LIVE IN THE CLOUDS





FACILITIES



SUSTAINABILITY

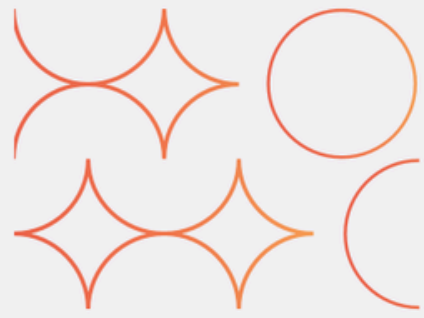


Future-focused and  
driven by sustainability

Welcome to this thoughtfully designed, well-  
connected, modern day haven built to bring the  
oneness of humanity to your life.

WORLD-CLASS  
SAFETY

AMENITIES



Top class amenities  
& features



World-class safety  
and security services

LET THE SHOW  
BEGIN





YOU ARE  
NATURE.

NATURE  
IS YOU.

Look around. Ubuntu is built to be a liveable landscape; a beautiful amalgamation of ecology, design, luxury, function and community. The existence of one elevates the other. The very foundation of Ubuntu, extended to the built environment with 80% open space to let you, your home and every amenity breathe.



# THE POETRY OF FORM AND SPACE

## The grand entrance

Secure, stylish, modern... This is the gateway to everything that is yet to come. Everything that you will become.





# SOLITUDE AND TOGETHERNESS COEXIST

Every home shares a sense of purpose, identity and community. What they don't share are any walls. Privacy within. Community just outside.







# BEING CORNERED IS A LUXURY.

Now we go to a space that you can call your own.

Each one of these homes is a corner flat, open to sprawling views of nature, cross-ventilated, and full of light, wind and joy. The 2, 3 and 4 bedroom apartments here overlook beautiful views and are smart, energy-efficient, joyous spaces.





# ROOM FOR LIFE

With spacious, thoughtfully designed interiors, every home is designed for you to live your best life.

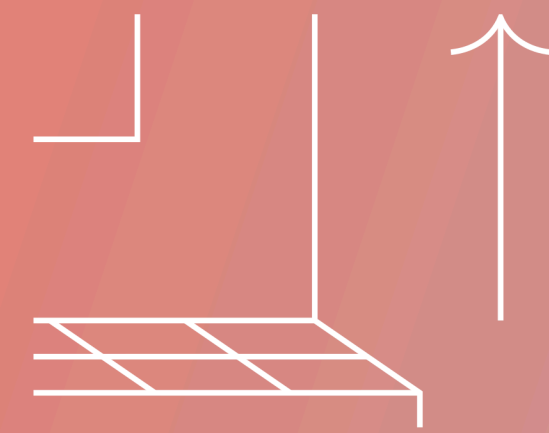


# LIVE RIGHT. LIVE LIGHT.

Every Ubuntu home is IGBC Platinum certified, built in a green and sustainable way, saving energy, increasing water efficiency, and reducing carbon emissions. Better for you and your family. Better for your utility bills. Better for the planet.

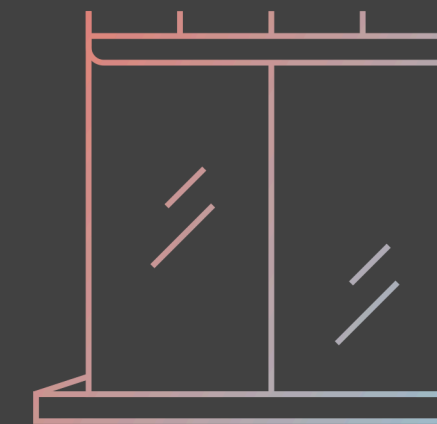






# HEIGHTS OF LUXURY

Live large, with a luxurious floor-to-floor height of 3.3 metres in every home — 10% higher than other projects.



# STAND TALL

Every window is a view and every entrance is a grand one with windows and door in all homes being 8 feet high, taller than anything you'll see in the market.



# A MEANINGFUL BUILD

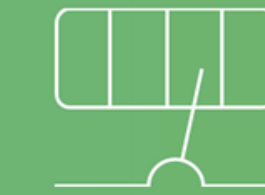
Ubuntu is Indian Green Building Council (IGBC)



Efficient lighting system



Energy efficient equipment



Energy metering system



Garbage chute system



Optimization on structural design



Local & eco-labelled materials



Alternative construction materials



Organic waste composting (100%)



Efficient landscape design (40% of site area)



Electric charging facility (50%)



Universal design



Water efficient fixtures (40% savings)



Ample daylighting



Adequate fresh air & cross ventilation



Connectivity to the exteriors



Low VOC materials, paints & adhesives



Rain water harvesting (100% roof & non-roof run-off)



Waste water treatment & reuse (100%)



Water metering (100% units and common areas)



HCFC Free equipment



Tot-lots & play areas



Physical well-being facilities



Green house keeping chemicals



COVID-19 prevention measures



# NATURE CLIMBS EVERY WALL

Nature thrives outside, upward, onward

Just outside, the vertical garden rises – an integral part of the tower and your home itself. Plants grow. Flowers bloom. Your home.. It lives. It thrives. Stand below and look up at the expanse of green that towers above you.







# CLIMATE CONTROLLED BY NATURE

Weather no bar  
The abundance of nature built into the tower gives you natural light, ventilation, regulated temperatures, and pleasant conditions.



# HOMES BUILT FOR TOMORROW. AND THE TOMORROW AFTER THAT.

If these walls could talk (and here they actually can), they would say that not only is this home future-proof, it's proof of the future that is to come.



Smart appliances



Controls on phone  
and tablet



Automated lighting  
and fans



Motion sensors in  
bathrooms



Voice control



Scene based  
control



Schedule and  
automate scenes



Remote access



Seamless integration  
of technology



# EVERYTHING THE LIGHT TOUCHES IS YOURS

Every window is a view

Throw open a window and look out over uninterrupted views of the world below. Green, lush, and lit by the light of a brilliant golden sun.







# LEGEND

- |                                    |   |                                  |
|------------------------------------|---|----------------------------------|
| 1 Entrance                         | 22 Cultural Plaza                       | 43 Flea Market                   |
| 2 Water Feature Landscaped Seating | 23 Stage                                | 44 Skating Rink Bus              |
| 3 Entrance Plaza                   | 24 Feature Wall                         | 45 Bay Outdoor Cafe              |
| 4 Flowering Garden                 | 25 Seating Court                        | 46 Library Co                    |
| 5 Avenue Plantation                | 26 Butterfly Garden with Sunken Seating | 47 Working Space                 |
| 6 Sculpture                        | 27 Entrance Court                       | 48 Supermarket                   |
| 7 Jogging Track                    | 28 Open Air Theatre                     | 49 Entrance Lobby                |
| 8 EPDM Play Court                  | 29 Senior Citizen Court                 | 50 Basketball Court              |
| 9 Sandpit Lawn                     | 30 Aromatic Garden                      | 51 Lawn Tennis Court             |
| 10 Kids Court with Seating         | 31 Isolation Court                      | 52 Swimming Pool with Party Deck |
| 11 Slate Wall                      | 32 Reading Court                        | 53                               |
| 12 Party Plaza                     | 33 Volleyball Court                     |                                  |
| 13 Party Lawn                      | 34 Cricket Net                          |                                  |
| 14 Dancing Court                   | 35 Outdoor Fitness Court                |                                  |
| 15 Deck                            | 36 Cab waiting Zone                     |                                  |
| 16 Palm Grove                      | 37 Cab Drop off Zone                    |                                  |
| 17 Outdoor Aerobics and HIIT       | 38 Outdoor Creche                       |                                  |
| 18 Medicinal Garden                | 39 Cycle Parking                        |                                  |
| 19 Reflecting Pool                 | 40 Indoor Yoga                          |                                  |
|                                    | 41 Indoor Play Area                     |                                  |
|                                    | 42 Indoor Seating Court                 |                                  |





# GRAND ENTRANCE LOUNGE

Space and style as you step indoors

Plush furniture. Modern decor. Touches of green. You'll see all this and more as you step into the grand lounges that serve as a worthy introduction to the indoor Ubuntu experience.



# OUTDOOR GYM & COURT







KIDS PLAY ZONE





OPEN AIR THEATRE

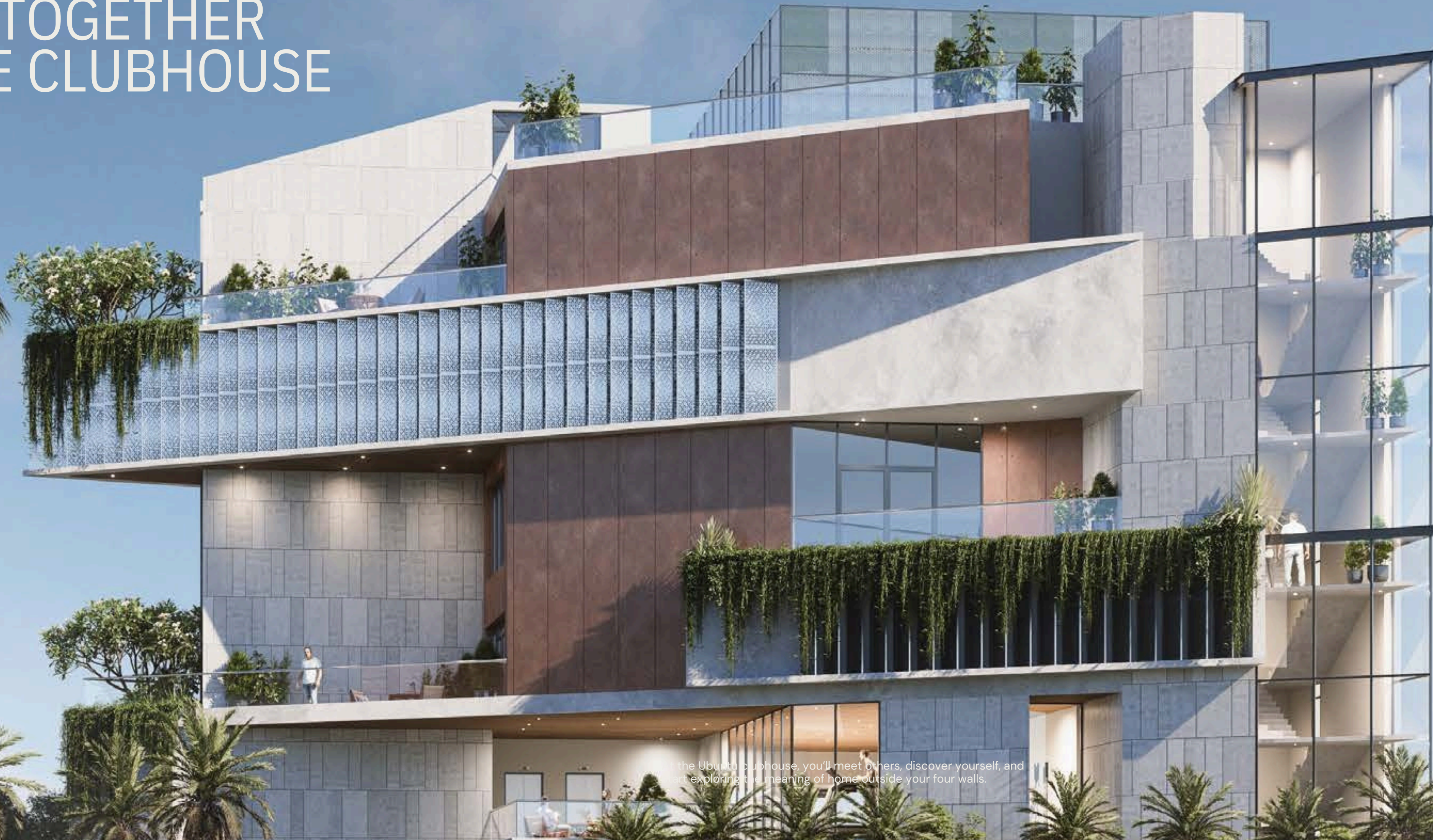




COWORKING SPACE  
WITH PRIVATE  
CONFERENCE ROOM



# COME TOGETHER AT THE CLUBHOUSE



At the Ubuntu Clubhouse, you'll meet others, discover yourself, and start exploring the meaning of home outside your four walls.





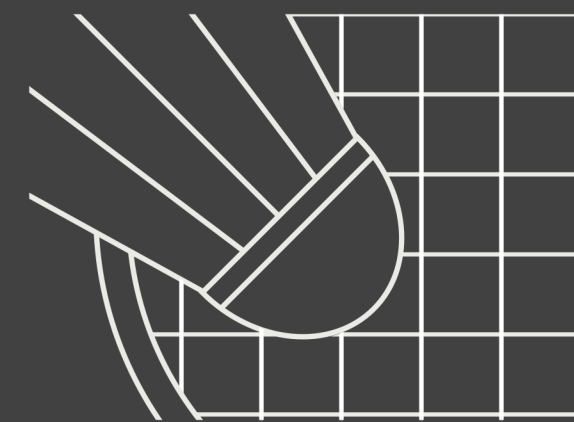
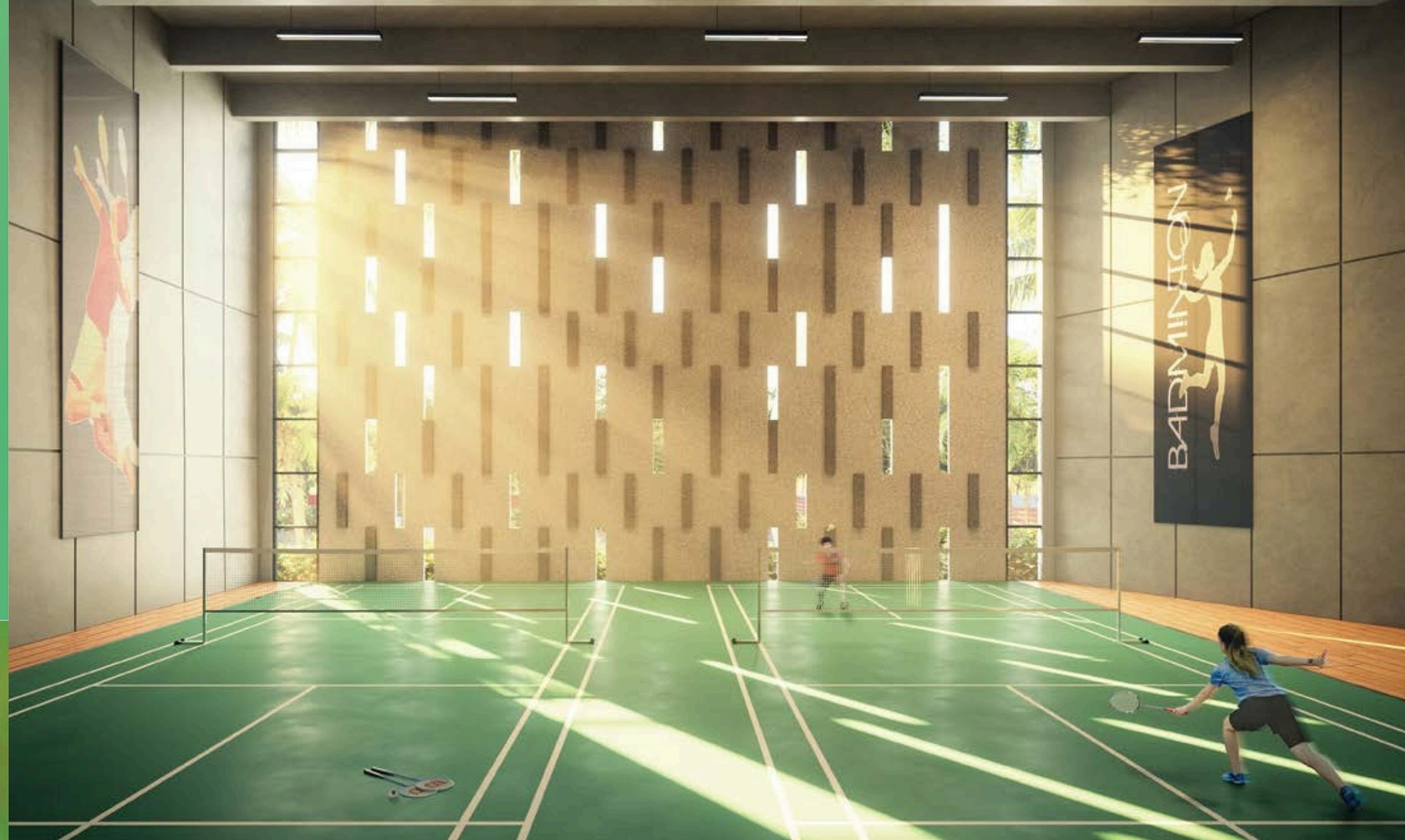
A/C SPORTS LOUNGE  
WITH BOWLING ALLEY





# INDOOR GOLF

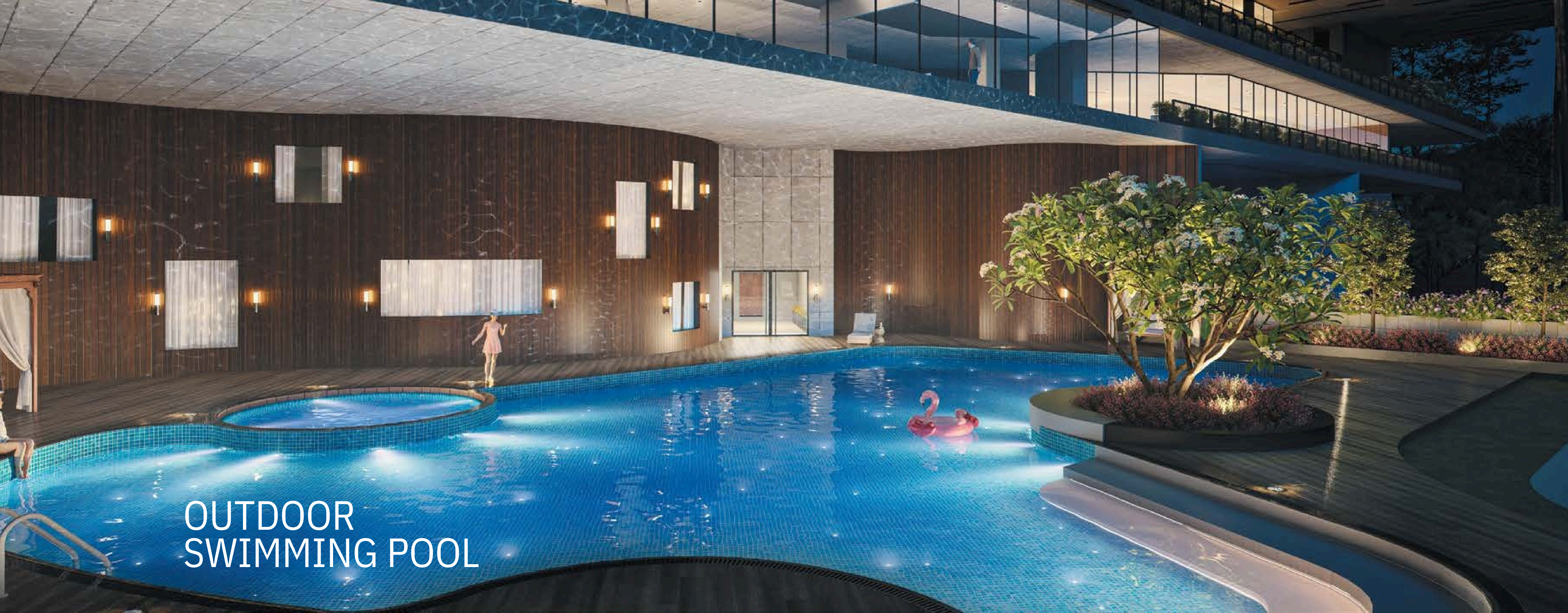
Take a mulligan on unwinding and just being yourself.



# SQUASH AND BADMINTON COURT

To shuttle between sport and fun.





OUTDOOR  
SWIMMING POOL





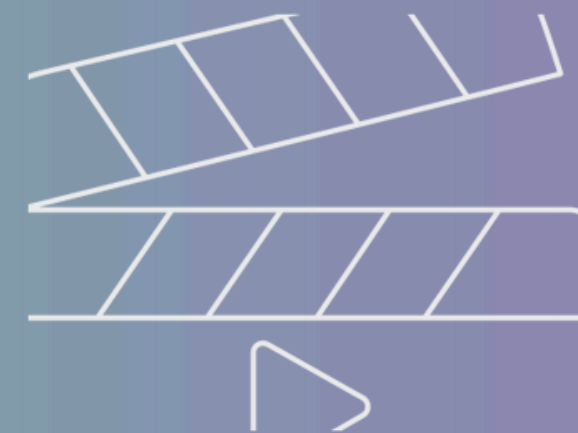
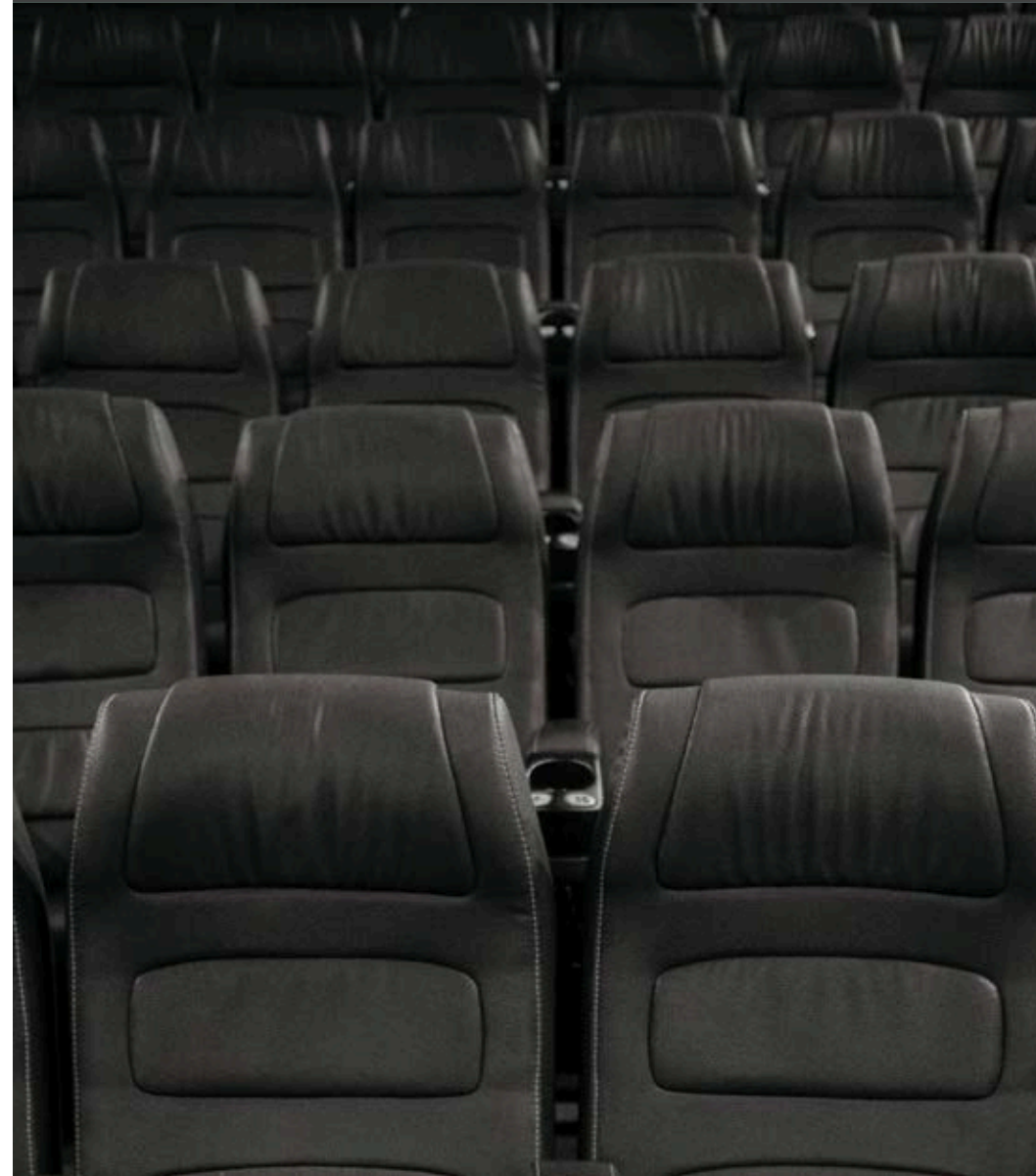
## UNISEX SALON & SPA

Rejuvenation is right outside your door.



## PHYSIOTHERAPY ROOM

Loosen up for all of Ubuntu's activity options.



## PREVIEW THEATRE

For your own private screenings.



## A/C GYM

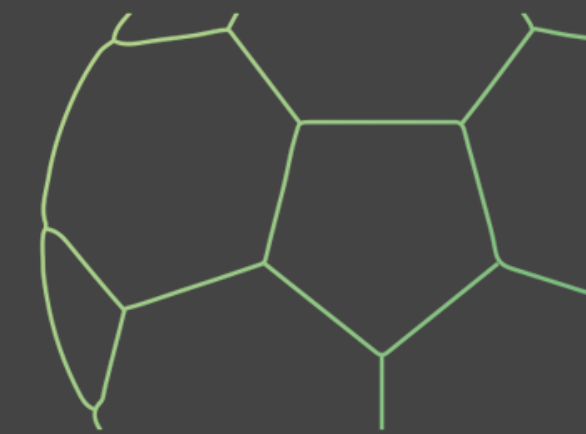
For getting in the best shape of your life.





# BOXING RING

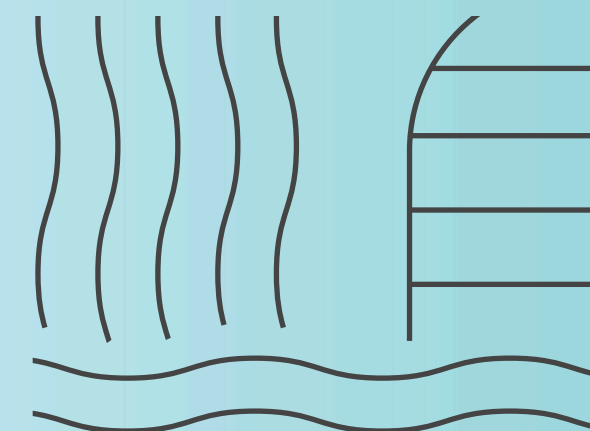
For quick feet and quicker reflexes.



# FOOTBALL

Gather and kick-off on the Clubhouse roof.





## TEMPERATURE CONTROLLED SWIMMING POOL

The perfect pool, at the perfect temperature  
Plunge into our temperature controlled pool leaving everything else behind. It'll just be you, the water, and your body suspended in this carefree limbo until you emerge.



## CENTRAL KITCHEN WITH CONCIERGE

Delicious is on demand  
Ubuntu's central kitchen is an international standard fully staffed facility cooking a delectable choice of dishes for every resident to savour, when they want home food without cooking it themselves.





## HOBBY ROOMS

Nurture your passion for music and dance, or pick up new ones that help you thrive.



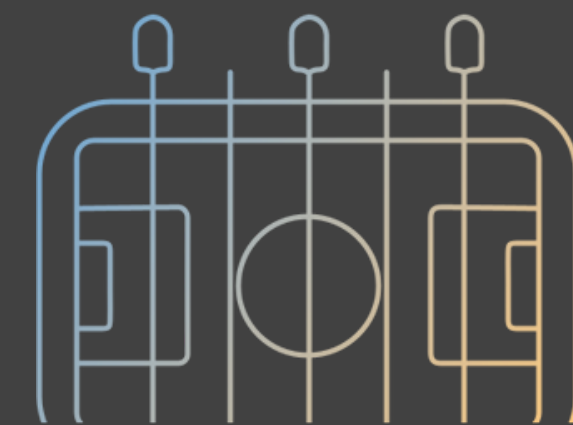
## INDOOR GAMES ROOM

Games for every age, from toddlers to adults who want to battle it out arcade-style.



## MULTI PURPOSE PARTY HALL

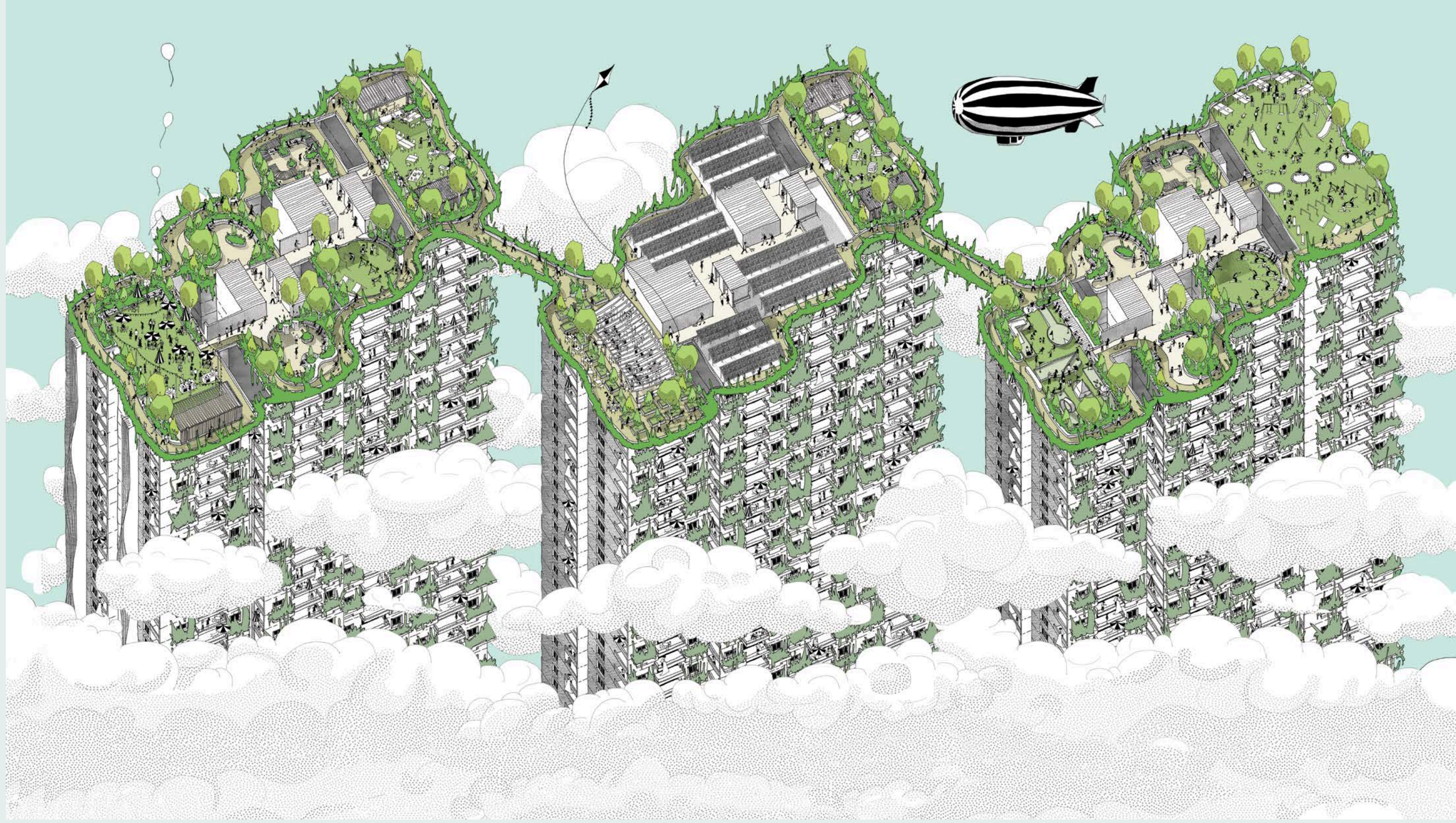
Where every victory and occasion is celebrated with flair.



## INDOOR SPORTS ARENA

Games like air hockey, billiards, TT and foosball keep you young at heart and always game to play.







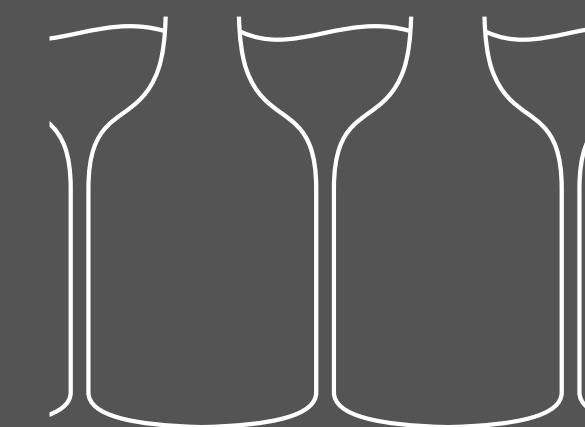
Every amenity you want or need to live a more wholesome life is all an elevator ride away. Upstairs, you'll emerge onto a space that's not your typical tower terrace. The three towers of Ubuntu are connected to form a unique community space in the sky for every inhabitant. All inhabitants. Individually, and together.

# HUMANITY COMES TOGETHER RIGHT UPSTAIRS



## READING CORNER

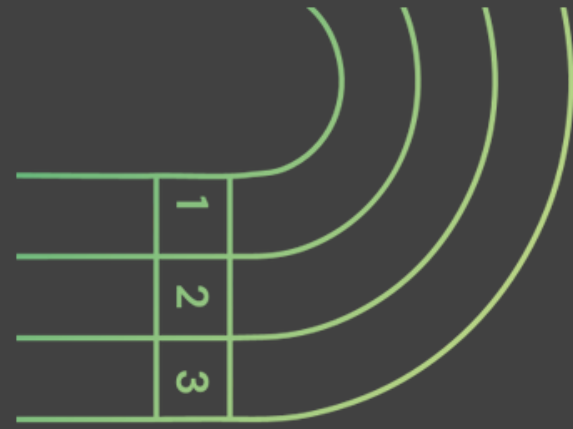
A silent green nook perfect for you to curl up outdoors with a good book.



## COMMUNITY DINING

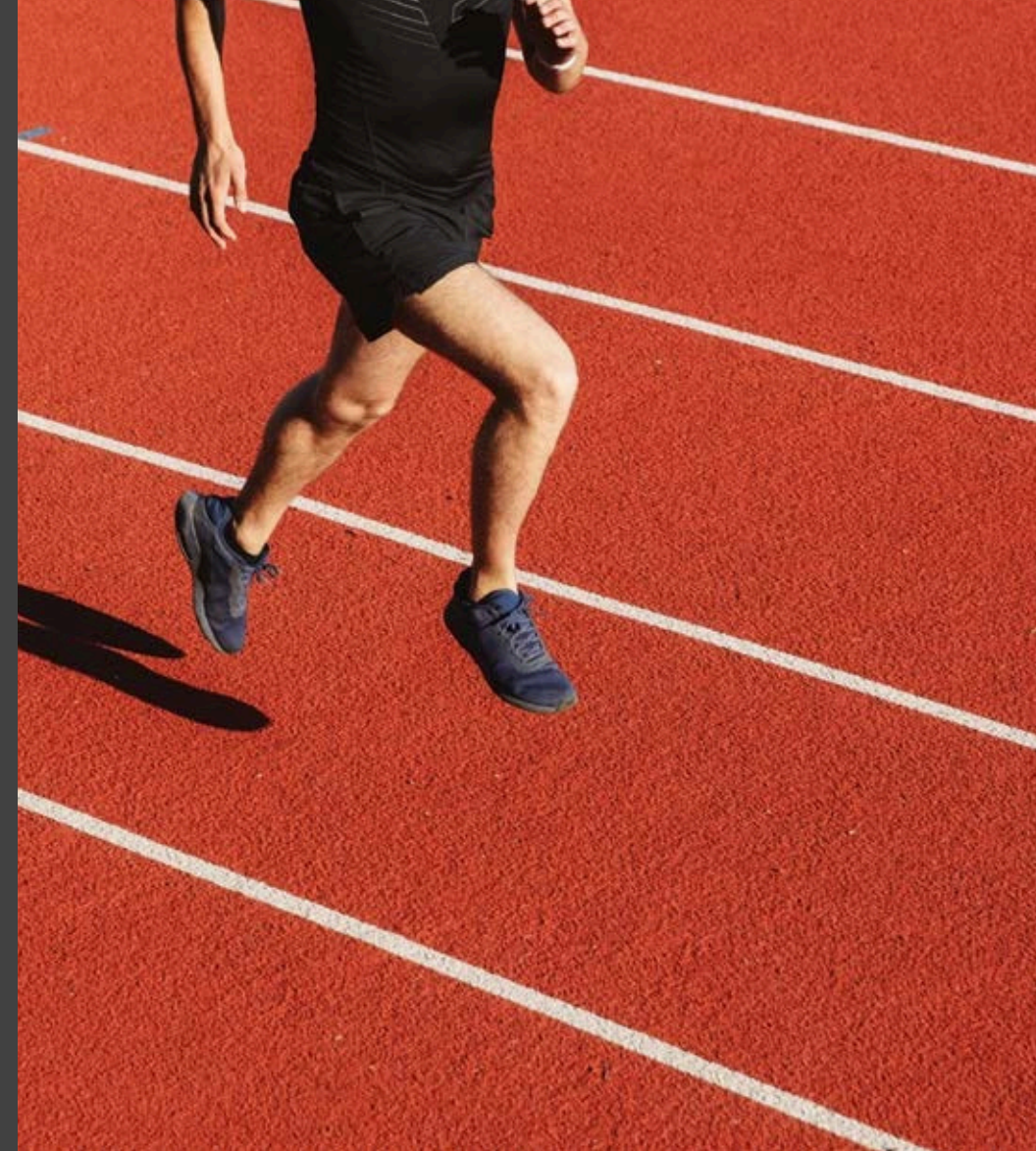
Break bread with your neighbours in this community space that unites residents over regular dining events.





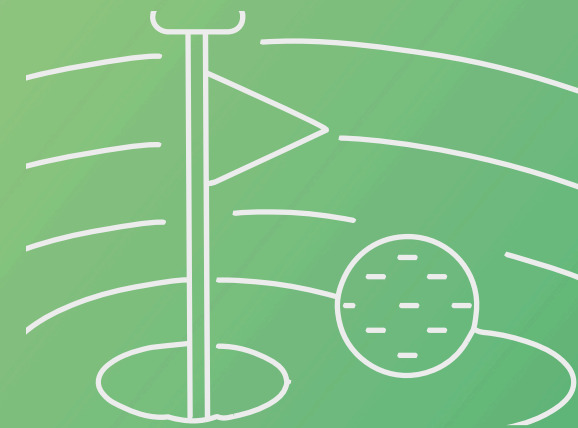
## JOGGING TRACK

Lace up and take off to get those steps in.



## OUTDOOR WORKSTATIONS

Redefine your office space with outdoor areas for peak productivity.



## MINI GOLF

Tee off with family, friends and colleagues.



## PERIPHERAL PLANTATION

Wherever you step foot in Ubuntu, greenery will be close at hand.





## PARTY LAWNS

For every celebration, with every friend.



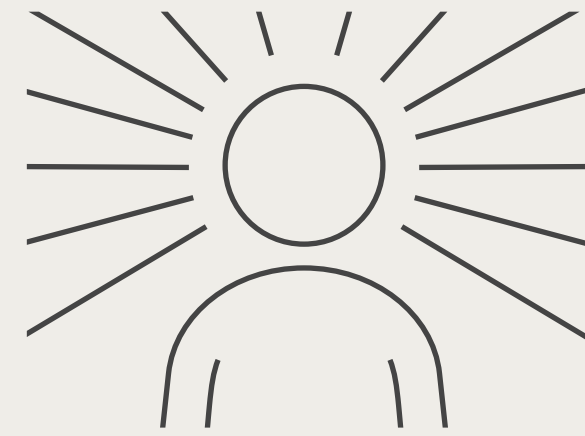
## COMMUNITY GARDEN

Be one with the earth

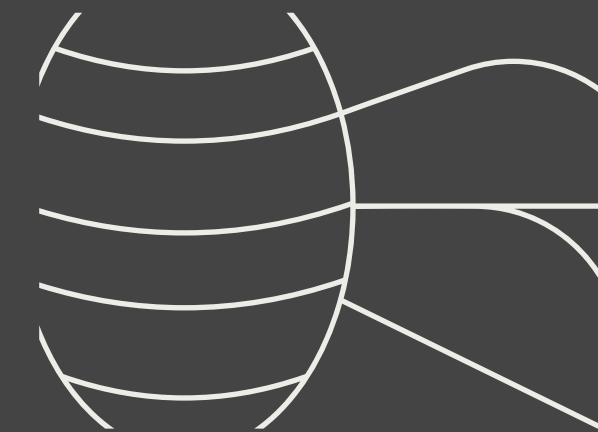
With hydroponics, sustainable gardening and a lot of love, the makers of Ubuntu have integrated flora into all your surroundings. This community garden is made for you to get your hands dirty and sow the seeds of contentment, and to flourish alongside the greenery.







**YOGA LAWNS**  
Peaceful mind, peaceful life.

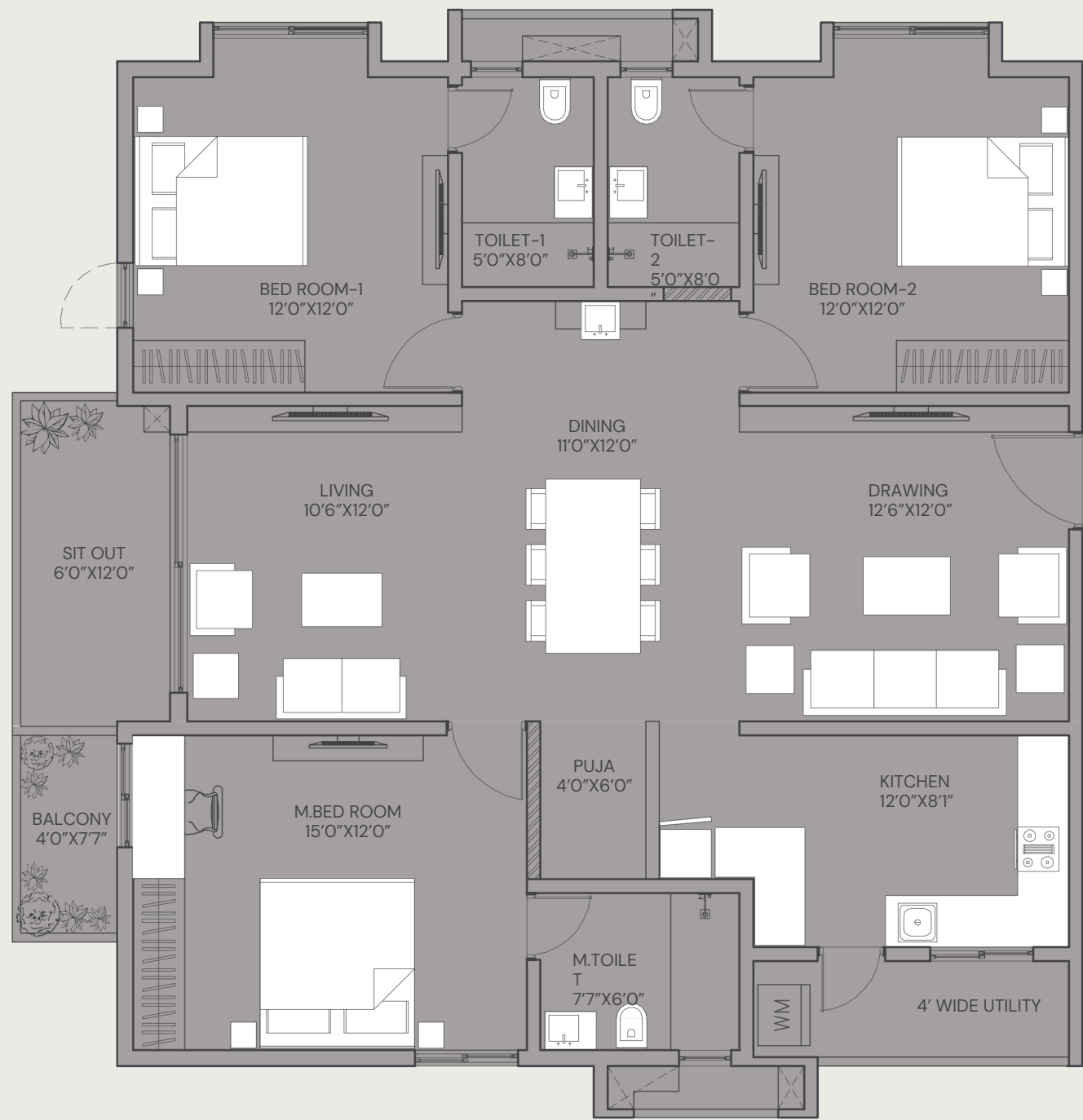


**NECTAR GARDENS**  
Be one with nature.



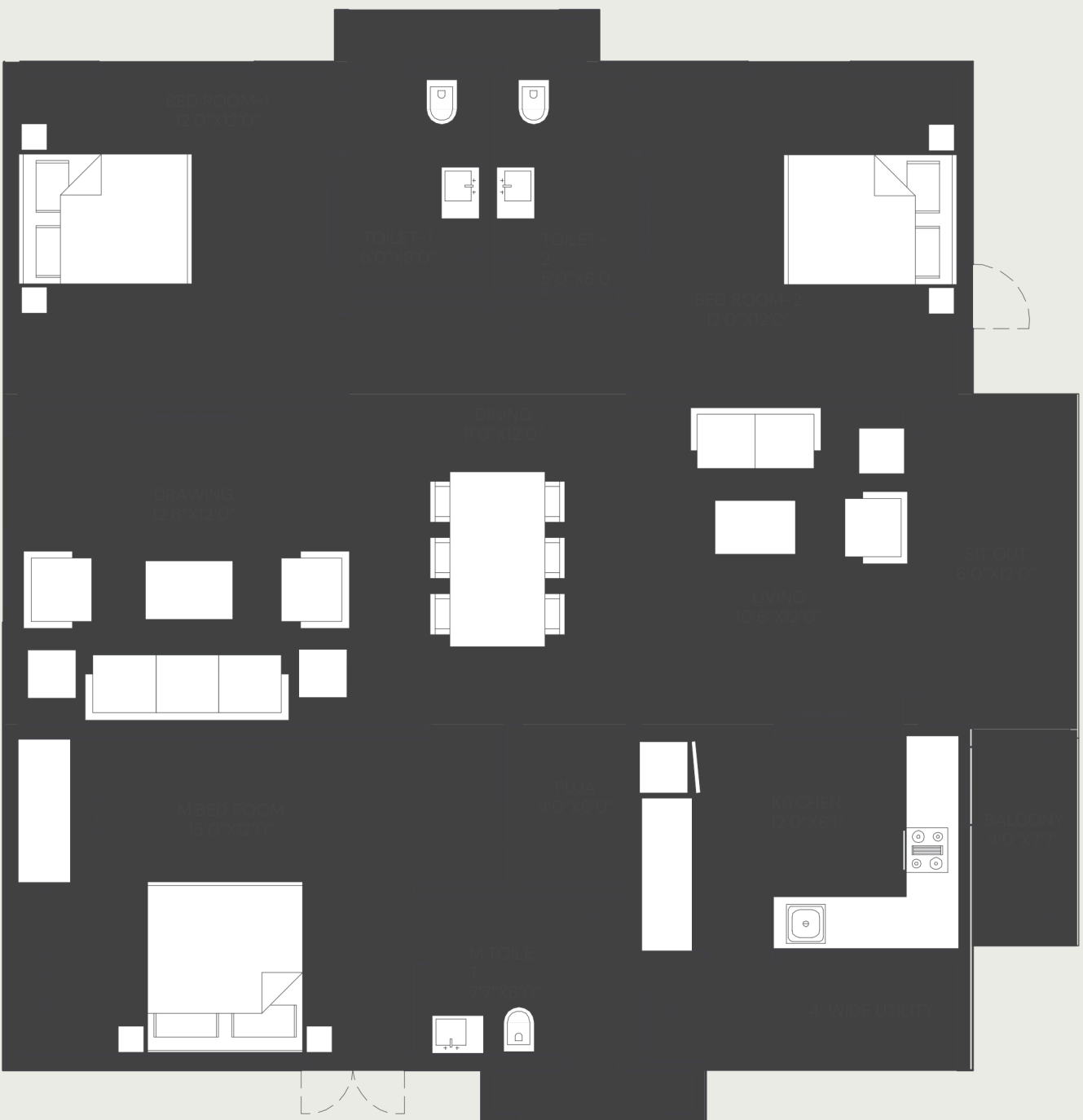
3BHK | 1905 SQ.FT.  
East Facing

Unit Plans



3BHK | 1905 SQ.FT.  
West Facing

Unit Plans







LET'S GO HOME.